

Regulatory Story

[Go to market news section](#)



Thalassa Holdings Limited - THAL Director's Dealing
Released 07:00 05-May-2016

RNS Number : 2854X
Thalassa Holdings Limited
05 May 2016

5 May 2016

Thalassa Holdings Ltd
(Reuters: THAL.L, Bloomberg: THAL:LN)
("Thalassa" or "the Company")
Director's Dealing

Duncan Soukup, the Chairman of Thalassa, advised the Company that on 4 May 2016 he bought 25,000 shares in the Company at a price of 44p per share.

Following completion of this transaction, Mr Soukup will be interested in 3,562,571 shares in the Company, which will represent 15.1% of the issued share capital of Thalassa, based on 23,608,865 shares in issue (excluding shares held in treasury).

Investor Enquiries:

Thalassa Holdings Ltd

Duncan Soukup, Chairman +33 (0)6 78 63 26 89

WH Ireland Limited (Nominated Adviser and Broker)

Chris Fielding, Head of Corporate Finance +44 (0)207 220 1650

Press Enquiries:

Square1 Consulting (Public Relations)

David Bick +44 (0)207 929 5599

www.thalassaholdingsltd.com

Notes to Editor:

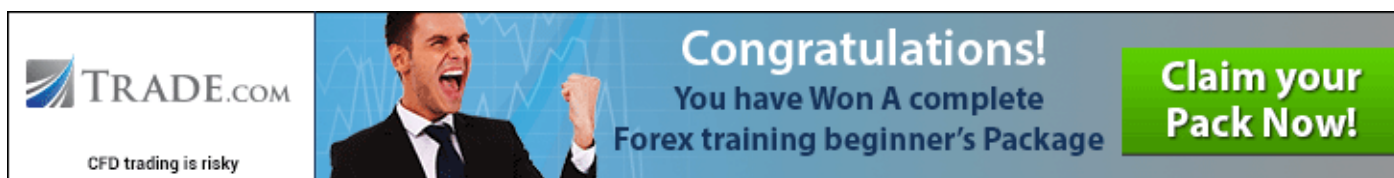
Thalassa Holdings Ltd, incorporated and registered in the BVI and quoted on AIM, is a holding company with subsidiaries in the Energy Services and Defence and Homeland Security Industries, with a focus on marine seismic operations.

This information is provided by RNS
The company news service from the London Stock Exchange

END

DSHQZLFBQEFXBBE

CLOSE



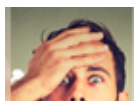
TRADE.COM
CFD trading is risky

Congratulations!
You have Won A complete
Forex training beginner's Package

Claim your Pack Now!

Sponsored Financial Content





'Investors should avoid panic selling'
says Michelle McGrade
TD Direct Investing



Enjoy a better retirement with peer to peer lending
ThinCats



Get a free guide to investing for income
St. James's Place



Tax-free income
J.P. Morgan

London Stock Exchange plc is not responsible for and does not check content on this Website. Website users are responsible for checking content. Any news item (including any prospectus) which is addressed solely to the persons and countries specified therein should not be relied upon other than by such persons and/or outside the specified countries. [Terms and conditions](#), including restrictions on use and distribution apply.

©2014 London Stock Exchange plc. All rights reserved

Director's Dealing - RNS